



AUCTION



FOR: MARY AND DALE BEFORT

WEDNESDAY, FEBRUARY 22ND, 2012

80 ACRES

MORE OR LESS

ELLIS CO., KS

AUCTION LOCATION: Farmland Auction and Realty Co. Inc.,
2707 Broadway Hays, Kansas 67601

TIME: 10:00a.m.

Internet bidding available. Register to bid online by February 15th, 2012. Call for details.

Legal Description:

East Half (E/2) of Northeast Quarter (NE/4) of Section Three (3) Township Thirteen (13) South, Range Twenty (20) W 6 P.M. Ellis County, Kansas

F.S.A. Information:

81.4 acres grassland/expired C.R.P.

Land Location:

From the Ellis Kansas I-70 exit one half mile north, then one and three fourths miles east.

General Information:

This farm is presently expired C.R.P. grassland, although the soil types and slopes are conducive to farming practice.

Possession:

Upon Closing

Terms:

10% down by day of sale, balance to be paid upon title approval and delivery of a good and sufficient deed, said closing to be on or before March 23rd, 2012 or as soon as title requirements, if any, can be corrected.

Taxes:

Seller to pay all the 2011 and prior taxes.
Purchaser to pay all 2012 and subsequent taxes.

Government Programs:

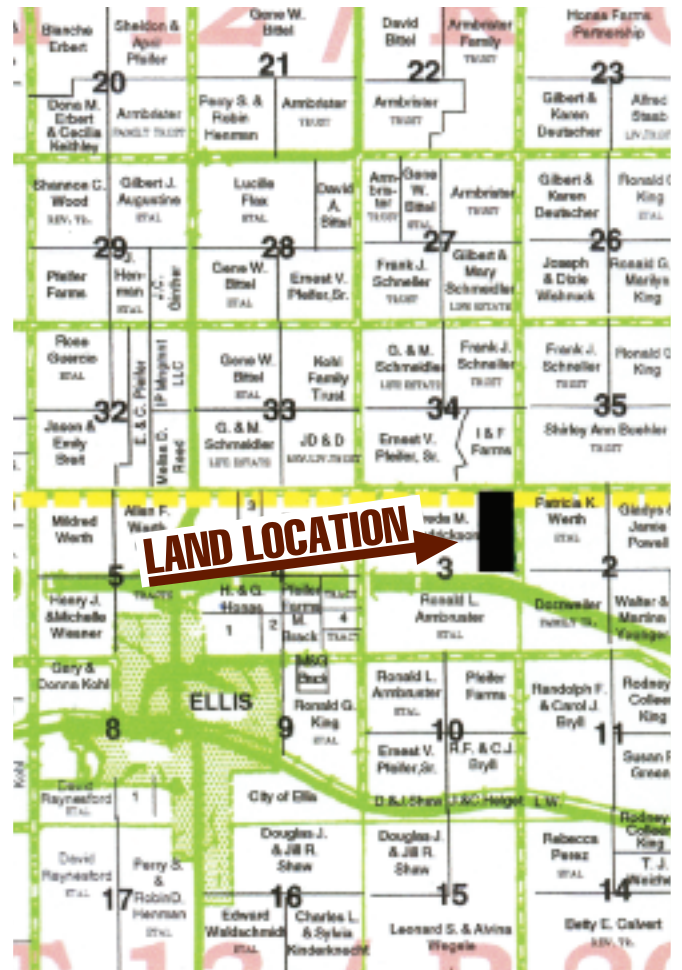
Purchaser to stay in compliance with all U.S. Governmental Programs the property is presently enrolled in. F.S.A. payments to follow crop interest.

Minerals:

All sellers interest to be conveyed.

Note:

Announcements made day of sale shall take precedence over printed material.



Agency Disclosure: Farmland Auction & Realty Co., Inc. is the agent of the seller. If the purchaser desires representation, legal counsel is advised.

Farmland Auction & Realty Co., Inc.

2707 Broadway Hays, Kansas 67601 (785) 628-2851 Toll Free 1-888-671-2851
E-Mail: farmland@farmlandauction.com Web: www.farmlandauction.com

